

FOR IMMEDIATE RELEASE  
Contact Dennis Nance  
713-528-5858  
dnance@lawndaleartcenter.org

# LAWNDALE ART CENTER

4912 Main Street  
Houston, TX 77002  
713 528-5858  
Fax 713 528-4140  
[askus@lawndaleartcenter.org](mailto:askus@lawndaleartcenter.org)  
[www.lawndaleartcenter.org](http://www.lawndaleartcenter.org)

## Lawndale Art Center Presents

### Exhibitions on view March 15 – April 20, 2013

Opening Reception March 15, 2013, 6:30 - 8:30 PM  
Artist talks at 6 PM

**Crystal Palace** • Mike Beradino  
John M. O'Quinn Gallery

**REady MADE** • Brian Benfer, Sharbani Das Gupta, Jessica Dupuis, John Emerson, Jeff Forster and Kamila Szczesna  
Cecily E. Horton Gallery

**The Breathless Bagatelle** • Richard Nix  
Grace R. Cavnar Gallery

**A chain of non-events** • Katie Wynne  
Project Space

**Box City** • Rahul Mitra  
Mary E. Bawden Sculpture Garden

Houston, Texas - Lawndale Art Center presents five exhibitions **opening March 15, 2013, 6:30 - 8:30 PM**, with artist talks beginning at **6 PM**. **Mike Beradino's** exhibition **Crystal Palace** utilizes a hovering robot and laser projector to map the John M. O'Quinn Gallery. In the Cecily E. Horton Gallery, **REady MADE** features the work of six artists who integrate discarded items with clay and ceramic processes. The exhibition, featuring work by **Brian Benfer, Sharbani Das Gupta, Jessica Dupuis, John Emerson, Jeff Forster** and **Kamila Szczesna**, takes place in conjunction with the National Council on Education for the Ceramic Arts (NCECA) 47<sup>th</sup> Annual Conference, March 20-23, 2013. An additional reception will take place March 21, 2013, 6-8PM during the NCECA conference. In the Grace R. Cavnar Gallery, **Richard Nix's** exhibition **The Breathless Bagatelle** includes process drawings made through set rules referencing geometric principles. In the Project Space, **Katie Wynne** creates an installation of exuberant colors and textures for the exhibition **A chain of non-events**. In the Mary E. Bawden Sculpture Garden, **Rahul Mitra's Box City**, constructed of hundreds of painted cardboard boxes he recycles from trash, echoes slums of his native India and Favela shantytowns.

CHAIR	JENNY JOHNSON
VICE-CHAIR	NICOLE LAURENT ROMANO
VICE CHAIR - MARKETING	PAULA MURPHY
VICE CHAIR - FUNDRAISING/DEVELOPMENT	ELEANOR L. WILLIAMS
SECRETARY	VICTORIA LUDWIN
TREASURER	DAVID R. GRAHAM
PAST CHAIR	DIANA HUDSON
PROGRAMMING CHAIR	ADRIENNE JOHNSON YOST

JAMES ANDERSON, JR.  
AMY BLUMROSEN  
LISA BROOKS  
ARTURO CHAVEZ, AIA  
JILLIAN CONRAD  
TOM DOWNING  
JOSHUA FISCHER  
SEBASTIAN FORRAY  
FRANCIS GIAMPIETRO  
ADAM GIBSON  
RACHEL HEWLETT  
BRIAN JAMES  
TIM KOLLATSCHNY  
DOUG LAWING  
MICHELLE LEWIS-BLOSSMAN  
VICTORIA LUDWIN  
LESTER MARKS  
GABRIEL MARTINEZ  
JERYN WOODARD MAYER  
KATE McCONNICO  
BARBARA FRIEDEL McKNIGHT  
BRITT RAGSDALE  
ANDREW SCHIRRMMASTER III  
CHRISTOPHER SPERANDIO  
SANDRA ZALMAN

EMERITUS  
GRACIE CAVNAR  
TIM CROWLEY  
JONATHAN DAY  
ANITA GARTEN  
ANN HARITHAS  
CECILY E. HORTON  
KAROL KREYMER  
MARSHAL LIGHTMAN  
BROOKE STROUD  
JAMES SURLS

STAFF  
CHRISTINE JELSON WEST  
Executive Director  
  
DENNIS NANCE  
Exhibitions and Programming  
Director  
  
EMILY LINK  
Community Relations Coordinator  
  
REGINA VIGIL  
Office Manager  
  
JOHN MENG  
Graphic Design Intern

- MORE -

# LAWNDALE ART CENTER

4912 Main Street

Houston, TX 77002

713 528-5858

Fax 713 528-4140

[askus@lawndaleartcenter.org](mailto:askus@lawndaleartcenter.org)

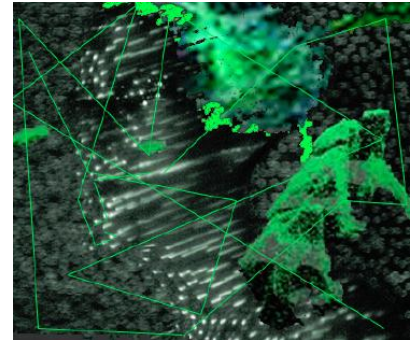
[www.lawndaleartcenter.org](http://www.lawndaleartcenter.org)

John M. O'Quinn Gallery

**Mike Beradino**

***Crystal Palace***

*Crystal Palace* is an installation consisting of a dimly lit screens painted with photo luminescent-pigment. A custom built green channel laser "projector" will then project graphical interpretations of the space on to the photo luminescent screens for a few minutes. The projector then turns itself off, leaving an embedded image on the wall that slowly fades away. The projections will continue to cycle until the sensor array connected to a hovering robot begins to compile a new data set. The subject matter of the projections are graphical interpretations of the space and are sent directly from the hovering robot to the "projector." These interpretations will change depending on a number of site specific variables.



*In 1984, Mike Beradino sat for hours at his Commodore 64 writing code to produce representational images on the digital screen. Combining the successes and failures of technological advancement that have occurred since then, Beradino manipulates this history of consumer technology prompting questions about digital mediation, the functional obsolete, and our collective notion of progress. A centralized theme of the work is an investigation of the distortion of media itself, often occurring through a process of recursion. Many of the works translate information while exploring the limitations of our ability to truly understand the vector of the message.*

*Mike Beradino lives and works as a practicing artist and adjunct professor in Houston, TX. He has a BFA from School of Art Institute of Chicago & MFA from Parsons The New School of Design. He has recently shown at Postmaster's Gallery (New York), The Joanna (Houston), Vertexlist (Brooklyn), The Kitchen (New York), Arthouse at the Jones Center (Austin), and Rice University's EMERGENCY Room.*

[www.mikeberadino.com](http://www.mikeberadino.com)

Cecily E. Horton Gallery

**Brian Benfer, Sharbani Das Gupta, Jessica Dupuis, John Emerson, Jeff Forster and Kamila Szczesna**

***REady MADE***



*In conjunction with the National Council on Education for the Ceramic Arts (NCECA) 47<sup>th</sup> Annual Conference – Houston, TX – March 20-23, 2013*

**NCECA Reception**

Thursday, March 21, 2013

6 - 8 PM

*REady MADE* features the work of six artists who integrate discarded items with clay and ceramic processes as a means of personal expression. Through this investigation the works transform from being "ready mades" to being re-



**Sharbani Das Gupta**  
*Chemosynthesis* (detail), 2012  
Found scrap, raw clay, wax  
45" x 24" x 6"

- MORE -

# LAWNDALE ART CENTER

4912 Main Street  
Houston, TX 77002  
713 528-5858  
Fax 713 528-4140  
[askus@lawndaleartcenter.org](mailto:askus@lawndaleartcenter.org)  
[www.lawndaleartcenter.org](http://www.lawndaleartcenter.org)

made. While Brian Benfer's work is the resulting residue from his process, Jessica Dupuis and Kamila Szczesna dip their found objects in slip and fire, transforming them into completely new and often unrecognizable compositions. John Emerson takes a vastly different approach, slip casting old objects to create multiples that are then constructed into formal arrangements. While Sharbani Das Gupta also employs the casting process, she then reconstructs these forms with un-altered discards to speak to consumption and lost. Jeff Forster covers found objects in raw clay, exploiting the living quality of the material, to emphasize the fragility of the culture that produced them.

**Brian Benfer** received his M.F.A. in Visual Arts from Mason Gross School of the Arts at Rutgers University. He has worked in a variety of media including site-specific installations, sculpture, video, ceramics, paintings and performance art. He has exhibited his work throughout the U.S. and abroad, is included in various private and museum collections and has held numerous academic posts over the course of the last decade. He currently lives and works in Seattle, Washington.

**brianbenfer.com**

After graduating in visual communications from the National Institute of Design of India, **Sharbani Das Gupta** apprenticed at the Golden Bridge Pottery in Pondicherry. In 2000 Das Gupta relocated to Albuquerque where she worked as studio assistant at the porcelain studio in the University of New Mexico. She has also been a studio assistant at Penland and an artist-in-residence at the Houston Center for Contemporary Craft. Das Gupta has exhibited internationally, presented at the NCECA, lectured at universities, and had her work published in several journals. In 2013, Das Gupta will participate in a residency in Skopelos, Greece and a group residency of Indian ceramic artists in Fuping, China.

**sharbanidasgupta.com**

**Jessica Dupuis** received her MFA from the University of North Carolina at Chapel Hill in 2010, and her BFA with a concentration in Ceramics and Print Media from Alfred University in 2007. Dupuis exhibits her work regionally and nationally. She has been a resident artist at the Houston Center for Contemporary Craft and Women's Studio Workshop. She is a recipient of the International Sculpture Center's 2010 Outstanding Student Achievement in Contemporary Sculpture Award and a 2012-2013 Ella Fountain Pratt Emerging Artists Grant from the Durham Arts Council.

**jessicadupuis.tumblr.com**

**John Emerson** was born in Dracut, Massachusetts in 1983. After receiving his BFA from Massachusetts College of Art and Design in 2008, he continues to explore these avenues of creativity as a 2014 MFA candidate in ceramics at Alfred University.

**johnnyems.com**

Born in Albany Minnesota in 1974 **Jeff Forster** received a B.A. in Art Education from Saint John's University in 1998 followed by a M.F.A. from Southern Illinois University in Edwardsville in 2007. Forster's teaching experience includes classes at the Paramount Arts District in Saint Cloud Minnesota, The Armory Art Center in West Palm Beach

- MORE -

# LAWNDALE ART CENTER

4912 Main Street  
Houston, TX 77002  
713 528-5858  
Fax 713 528-4140  
[askus@lawndaleartcenter.org](mailto:askus@lawndaleartcenter.org)  
[www.lawndaleartcenter.org](http://www.lawndaleartcenter.org)

*Florida, Southern Illinois University in Edwardsville and the Sunshine Learning Center in Nagaoka, Japan. In addition, Jeff has taught at Lone Star College-North Harris where he spent a semester as the Interim Chair of Ceramics. Currently Jeff is the Chair of Ceramics at the Glassell School of Art.*

**jeffforster.com**

**Kamila Szczesna** was born in Wroclaw, Poland where she earned her Master's degree at the Academy of Art and Design. Her Work is held in public collections in Poland, Japan, Spain, Germany and Korea. Her work has been exhibited in in Poland, Japan, Spain, Germany, Denmark and Korea as well as in United States. She has been the recipient of the Assistance League Houston first prize, the first prize at "Contemporary Ceramics CERCO-09" Saragossa, Spain, Bronze Award at the 8th International Ceramics Competition in Tajimi City, Japan.

**kamilaszczesna.com**

---

Grace R. Cavnar Gallery

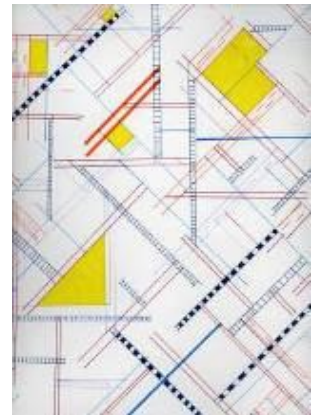
**Richard Nix**

***The Breathless Bagatelle***

Richard Nix creates drawings that are rooted in geometry and applies sets of rules that govern the process. An example of these rules includes: "The middle line on a 'C' and a 'D' note must be in Morse Code to the works of *Ode to Joy*. The background can be colored in when the sum of the lines add up to 9. No line can cross another line." Nix's intention is to create work based on process and to see what happens when given a set of rules how will these compositions evolve.

**Richard Nix** received his MFA in sculpture from the University of Houston in 2010, and his BFA in Visual and Applied Design from the University of Houston, Clear Lake in 2007. A native Texan, he has been exhibiting in Houston since 2007. Nix currently lives in Houston Texas.

**richardanix.blogspot.com**



**Richard Nix**  
*The Little Bagatelle*, 2012  
Pen and ink  
19" x 26"

---

Project Space

**Katie Wynne**

***A chain of non-events***

Katie Wynne's installations are exuberant, brushing upon the colors and textures of carnivals, parades and department stores, encapsulating our surrender to comfort and consumption. Duchamp once said of his readymade, *Bicycle Wheel*, "I enjoyed looking at it, just as I enjoy looking at flames dancing in a fireplace". The wheel demonstrates a

- MORE -

# LAWNDALE ART CENTER

4912 Main Street

Houston, TX 77002

713 528-5858

Fax 713 528-4140

[askus@lawndaleartcenter.org](mailto:askus@lawndaleartcenter.org)

[www.lawndaleartcenter.org](http://www.lawndaleartcenter.org)

constant movement, yet one without achievement or progress. Wynne's installation in the Project Space explores this quality of non-action within the context of an American promise, employing a processional format that stretches the length of the gallery in a continuously shifting landscape of stillness and effort.

**Katie Wynne** was born in Providence, Rhode Island. She received her BFA from the University of Massachusetts Dartmouth in 2003 and her MFA from Cranbrook Academy of Art in 2011. She attended the Skowhegan School of Painting and Sculpture, and has also participated in residencies at Ox-bow and the Vermont Studio Center on a Fellowship supported by the Joan Mitchell Foundation. Her work has been exhibited in Providence, Boston, Detroit, Miami and Houston. She is currently preparing for a solo exhibition at Good Weather Gallery in North Little Rock, Arkansas. Wynne currently lives and works in Houston, TX.

[katiewynne.com](http://katiewynne.com)



**Katie Wynne**  
*A chain of non-events*  
(detail), 2013  
Site specific installation

---

Mary E. Bawden Sculpture Garden

**Rahul Mitra**

**Box City**

Rahul Mitra's *Box City*, constructed of hundreds of painted cardboard boxes he recycles from trash, echoes slums of his native India and Favela shantytowns. For the last four years, Mitra has been engaged internationally in Europe and India in a critical observation and interpretation of social, economic, political and cultural aspects of the urban centers of the world to question what makes us different or similar. Architecture around the world is a record of human civilizations from the ancient to modern day, and distinguishes economic and social levels of its inhabitants. Slums and Favelas are commonly seen as an urban blight and residence for the destitute. The growth of the Slum/Favela is a reflection of the disparity and economic division in a culture, but having grown up in similar environment, Mitra sees the slum as a '*resilience of hope*' that is in a precarious balance with the rest of society. Seemingly, a small nudge is all that is needed to make these structures crumble, yet they seem to live on and grow just like the people building and occupying them.



**Rahul Mitra**  
*Box City*, 2012  
Spray paint, acrylic, markers on  
recycled cardboard boxes  
5' x 5' x 5'

**Rahul Mitra** is an artist, printmaker, photographer, writer, scientist and entrepreneur, born in Hyderabad, India, now living in Houston. Mitra uses visual language drawn from the streets to interpret personal, socio-political dialogues exploring poverty, ennui, custom, love, strangeness, technology, and linguistics captured as moments in life in

- MORE -

# LAWNDALE ART CENTER

4912 Main Street  
Houston, TX 77002  
713 528-5858  
Fax 713 528-4140  
[askus@lawndaleartcenter.org](mailto:askus@lawndaleartcenter.org)  
[www.lawndaleartcenter.org](http://www.lawndaleartcenter.org)

*urban spaces. His current work is focused on the Dialogues of Civilizations – a study of cultures and their common problems when time, space and contextual references are removed. He is engaged in street art projects in Delhi, India; Houston; Paris and Berlin. His linocuts, drawings and paintings have been exhibited exhibitions in USA, France, Italy, Serbia, Slovakia, Spain, Peru, Mexico, Greece and India in the last 4 years. He is one of the selected artists of the First Printmaking Triennial of ULUS in Serbia and Texas Biennial, 2011; India Art Fair 2012; Lone Star Performance Biennial. His current project is 'Box Cities' – street and public art installations in collaboration with street artists using cardboard boxes.*

---

For more information on upcoming exhibitions and programs, please visit  
<http://www.lawndaleartcenter.org>.

---

<b>About Lawndale:</b>	Lawndale Art Center develops local contemporary artists and the audience for their art. Lawndale is dedicated to the presentation of contemporary art with an emphasis on work by Houston artists. Lawndale presents exhibitions, lectures and events, and offers an annual residency program to further the creative exchange of ideas among Houston's diverse artistic, cultural and student communities.
<b>Address:</b>	4912 Main St., Houston, TX 77002
<b>For More Info:</b>	<a href="http://www.lawndaleartcenter.org">www.lawndaleartcenter.org</a> or <a href="mailto:askus@lawndalwartcenter.org">askus@lawndalwartcenter.org</a>
<b>Gallery Hours:</b>	Monday-Friday, 10-5; Saturday, 12-5; Closed Sunday
<b>Admission:</b>	Free
<b>Exhibition Dates:</b>	These exhibitions will open on Friday, March 15, 2013 and will remain on view through Saturday, April 20, 2013.
<b>Press Contact:</b>	Dennis Nance, 713-528-5858, <a href="mailto:dnance@lawndaleartcenter.org">dnance@lawndaleartcenter.org</a>

Programs at Lawndale are supported in part by The National Endowment for the Arts, Andy Warhol Foundation for the Visual Arts, The City of Houston through the Houston Museum District Association, The Texas Commission on the Arts, Houston Endowment, The Brown Foundation, Inc., The John R. Eckel, Jr. Foundation, The John P. McGovern Foundation, The Wortham Foundation, Inc., Art Colony Association, John M. O'Quinn, Cecily E. Horton, Ann W. Harithas, Diana M. Hudson and Lee Kaplan, Chinhui Juhn and Edward R Allen III, Bevin and Dan Dubrowksi, Bruce Eames, Anita and David Garten, Felvis Foundation/David R. Graham, Jenny and Mark Johnson, Jeryn and Walter Mayer, Paula Murphy, Andrew C. Schirmeister III, Scott Sparvero, Gabriela Trzebinski, TeleFlex, United Airlines, Kinzelman Art Consulting, Poggenpohl Design Studio and other contributors, memberships, benefit events and many volunteers.

- END -